



DUNCHURCH VILLAGE MAGAZINE

JUNE 2022

ISSUE 15

DUNCHURCH CELEBRATES



PLATINUM JUBILEE EDITION –
SEE INSIDE FOR DETAILS AND SOUVENIR PROGRAMME

IN THIS ISSUE	Welcome	2	Dunchurch Allotment		Dunchurch Scouts	31
	Dunchurch Festival Group	9	Association	19	Neighbourhood Watch	33
	The Green Man	11	Womens' Institute	20	St Peter's Church	35
	Dunchurch Parish		Onley Grounds	20	Baptist Church	37
	Council	12	Save Dunchurch	25	Dunchurch Traders	38
	Art in Dunchurch	14	District of Dunchurch		Girl Guiding	41
	A Very Personal		Brass	25	Directory	42
	Commission	15	Dunchurch Yesteryear	26		
	Dunchurch Oak Line	17	Doctors in Dunchurch	29	Centre pages – Jubilee	
			School News	31	Souvenir Programme	

PRODUCED BY FRIENDS OF DUNCHURCH SOCIETY

www.friendsofdunchurchsociety.org

email friendsofdunchurch@gmail.com

Formed by likeminded residents who love Dunchurch and its heritage and wish to protect and enhance its environment in order to make the village a better place to live in, work in and visit.



FRIENDS OF
DUNCHURCH
SOCIETY (FODS)

Welcome

The summer season in Dunchurch is going to be a very busy one with lots to look forward to including the annual village fete organised by the DFG, the celebrations for Her Majesty's Platinum Jubilee and the Dunchurch entry into Britain in Bloom, organised by FODS. However, none of these events would be possible without a collaboration whether it be with individual volunteers or with other groups. Every event requires teamwork and it is never too early or too late to volunteer.

A recent report produced by the Royal Voluntary Service even advocates 'Volunteering for a Healthier Britain' and suggests that volunteering should be recognised as a public health intervention. What an endorsement for getting

involved with your community and its projects!

Recently, volunteers from St Peter's Church have been visiting Dunchurch Park to help the residents improve their English skills and in return, Hamza who has been welcomed into the FODS gardening team reciprocated by helping with the planting of saplings in the field adjacent to the church yard. Another village volunteer worked with residents, baking delicious baklava for the FODS tabletop sale. Rewarding experiences for all involved.

Let's now hope we have a long and warm summer so we can all get out and enjoy our outdoor pursuits, village events and our volunteering with the sun on our backs!



FODS News

Platinum Jubilee Celebrations

There is much to enjoy over the June Bank Holiday weekend. Make sure you see our special Jubilee 'pull-out' section giving full details of the programme of events celebrating this

Some of the volunteers who planted saplings next to the church yard

very special occasion. We are particularly pleased to have played our part in providing Dunchurch with its very own Jubilee Beacon on The Heath and we send our thanks to Rugby Borough Council for giving permission for its installation and to Dunchurch Parish Council for funding it. This will be a permanent reminder of this occasion and will be usable for many years to come.

Platinum Pebbles To help celebrate Her Majesties Platinum Jubilee, we invite



A very patriotic ladybird!

people of all ages and abilities to paint a 'Platinum Pebble' and display it on the steps of the Market Cross. This can be any design of your choice. We hope this might especially appeal to

those who are less mobile, enabling them to participate from the comfort of their own home. If you are unable to deliver your pebble, we will be happy to collect. Just contact us.

Britain in Bloom

Blooming Barrows and Tantalising Troughs All over Dunchurch, people



One of last year's stunning creations by Jaine Thornton-Weeks

of all ages are planning the planting up of the troughs that provided such a spectacle last year and even more are currently under construction. In addition, we have another 20 wheelbarrows to add to last years and if you would like to 'adopt' one of these and display it in

Don't miss the Jubilee Crown Hunt! Over the bank holiday weekend, from Thursday 2nd of June, we will be hiding 70, 3-inch Jubilee crowns throughout the village for children to find. Aptly sprayed platinum and bearing the Queen's official Jubilee logo, these



will be a keepsake of this momentous occasion. When found, please feel free to post a photo of the 'finder' on our Facebook page. Happy hunting!

your street, please contact fodnews1@gmail.com This would be a great way of getting together with neighbours to share the cost and enjoy some social time.

Hanging Baskets New to the village. As part of the installation of the 11 new lampposts, each will have brackets fitted for two hanging baskets. We thank DPC for arranging this. The brackets will be fitted in time for our Britain in Bloom entry and FODS already have on order, planted baskets costing a total of £1,600. If any individual or business would like to sponsor a basket, please let us know. These will make a significant difference to the appearance of the judging route for Britain in Bloom.



We can look forward to even more of these this year



You're never too young to be a FODS Water Angel

Water Butts One of the issues with having such lovely floral displays in the village is the constant need for watering. We are trying to locate several, central sites where we may position a water butt to help conserve water. (Our thanks to The Green Man for accepting a water butt on their premises.) Volunteers to assist with watering would be appreciated. Contact Sue Turner on 07983 345381 if you can help. Thank you.

Gateway Planters We are investigating the possibility of having two more, one on the Coventry Road and another on Rugby Road. These do help to create a positive impact when entering the

The Rugby Montessori Nursery School

Vicarage Road Rugby

"Montessori is an education for independence, preparing not just for school but for life.."

Maria Montessori



Following our inspection in January 2022
we are delighted to announce that our
Nursery has been graded as an
OUTSTANDING PROVIDER by OFSTED

For a Nursery Prospectus

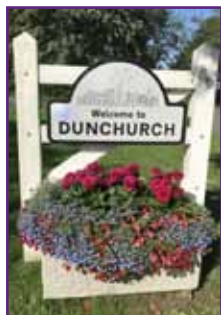
Tel: 01788 877010

email places@rugbymontessori.co.uk

Or for more information visit our website
www.rugbymontessorinurseryschool.co.uk

For children from 6 months to four years





village. If you would like to sponsor one, please get in touch.

Community Orchard

We are pleased to report that after consultation with a variety of organisations includ-

ing the Warwickshire Wildlife Trust, the orchard is now accessible to the community and will continue to be a carefully managed wildlife and wildflower haven. We have planted 30 hedgerow saplings, a mix of dog rose, hawthorn, hazel, crab apple and dogwood and hope to extend this further along the boundary fence when funds permit. These hedgerows will provide vital shelter and food for wildlife. The apple trees that have stood there for many years are an important part of this area and after many years of neglect, will now be cared for and preserved.

Thank you

FODS would

like to thank STELLANTIS for their generous grant of £500. This has gone towards the cost of 20 new wheelbarrows to help with this year's Dunchurch entry into the RHS Britain in Bloom competition.

STELLANTIS



The Queens Green Canopy As part of this initiative, we are pleased to be working with the Trustees of the Village Hall in establishing the Dunchurch Oak Line. We have also collaborated with St Peter's Church on the planting of 30 saplings in the field adjacent to the churchyard (ten each of Rowan, Silver Birch and Wild Cherry). The planting of the hedgerow in the orchard is also a part of this initiative. All of these will

help to improve our environment and wildlife habitats.

Think Perennials! Following guidelines from the RHS, we are concentrating on more sustainable

planting and where possible, you can expect to see more 'long life' plants in many of our floral displays. This is also a very useful tip for your own container planting.

Tabletop Sale Thank you everyone who supported our recent tabletop sale. We had a wonderful array of trade and community group stalls.





NEWLY RELEASED CANALSIDE HOMES IN RUGBY

Make your move this spring to your dream home at The Moorings in Rugby. With quality townhouses situated by the Oxford Canal, you can enjoy canalside walks or simply take in the views from your Juliet balcony.

3 and 4 bedroom homes from £351,995



The sale raised £730 in total and we will be selling the remaining toys/bric a brac items at a car boot sale soon.

FODS a Charitable Incorporated Organisation (CIO)

FODS is now a registered CIO (Foundation Model) run by a small group of individuals (the Charity Trustees). Under this type of CIO, the Charity Trustees are also the voting members who will be responsible for making the key decisions. The 12 Trustees come from a wide representation of the village, including

the Parish Council and village businesses. The Trustees are Keith and Lynne Brushett, Phill Freeman, Anne Marie Robinson-Gall, Barbara Harris, Tony and Sue Kember, Paul Le Poidevin, Keith Protheroe, Claire Siddaway, Sue Turner and Mark Udall. Together, they will be working hard with other village volunteers to 'protect and enhance the environment in order to make the village a better place to live in, work in and visit'.

Have a great summer everyone.



MAD
Make A Difference

We are a small band of villagers who love Dunchurch and want to keep making a difference to our village public spaces. We are not a gardening group but we enjoy cleaning and polishing our public spaces and monuments.

COME AND JOIN US!
We will be meeting for about an hour's work and afterwards for tea & coffee.

if you would like more information call 07857 182114 and ask for Lynne Brushett or Sue Kember

Thank you to the author of this anonymous prayer sent to FODS to aid the gardening group in their endeavours. A little divine intervention would be most appreciated for our Britain in Bloom entry.

Creator God,

We give thanks for your creation and acknowledge the responsibility you have given us to tend and care for your world.

We ask today your blessing upon all the FODS workers as they go about their duties in Dunchurch.

May their minds and bodies be always willing and their joints supple.

May they be blessed with good weather as they work and may their tools always be sharp.

May their endeavours be successful and friendships and good humour always be among them and around them.

We ask in Jesus' name.

Amen



Dunchurch Festival Group

By Rob Collings

Recently, we were very pleased to be invited to the grand opening of the Baptist Church as one of the organisations that contributed funds to the building costs. This new facility is a huge asset to the community with its modern and spacious building.

We sponsored a tree for the Dunchurch Oak Line project along with other groups in the village. These ten oak trees celebrate the Queens Platinum Jubilee and hopefully this will be a legacy that all in our village will enjoy for years to come.

Our Quiz Night was a success, bringing many locals out to stretch their brains a bit and to have fun at the same time.

The next event will be a Gin Experience Evening on 20th May where people can try different craft gins produced by a local distillery in Rugby and listen to a talk by one of the distillers.

Dunchurch Fete Sunday 26th June

The Village Fete is our big event of the year and the theme is '70 Glorious Years of Achievement' to celebrate the Queen's Jubilee. The day kicks off at 11.45am with the colourful parade along the Rugby Road path, starting opposite



The Chair of the DFG makes a flying entrance

the Dun Cow car park and traveling to the sports field where all floats and fancy dress contend-

ers will be judged. Anyone can join in the parade if they dress up or make a float based on the theme. The day will host the usual stalls, rides, singers and bands to keep you entertained all day. Refreshments will be provided by the ever popular BBQ, tea and cakes at Gail's tea room in the Village Hall annex, or a nice cold beer from the bar. The dog show will feature again with categories including waggiest tail and best fancy dress. Entrance is free but there is a charge for parking on the field (weather permitting). Dunchurch residents will be receiving the Grand Raffle tickets through their door soon and the draw will take place at the fete.

Over the years, the DFG has raised many thousands of pounds from our events, the fete being our 'cash cow' and last year, we gave away over £8,000 to local groups and good causes. The money we raise goes straight back into the community, helping to make Dunchurch the lovely place it is to live. More information can be found on our website dunchurchevents.org or our Facebook page.

Wombles Wheels

EXCLUSIVE PRIVATE HIRE

9 YEARS EXPERIENCE • CRB CHECKED

**07979 032 068 or
01788 811 723** (9am - 5pm)

Email: robin.woerner@hotmail.co.uk

***Need to
get to the
airport?***

**AIRPORTS • CRUISES • DAY TRIPS • THEATRE TRIPS
CORPORATE BUSINESS WELCOME**

*R. Woerner Trading as Wombles Wheels, specialises in long
distance work but short trips can be considered.*

Dunchurch Sportsfield & Village Hall

For
Hire

Dunchurch Village Hall and its facilities can be hired
for a variety of events - from Community Groups,
Fundraising Events & Public Meetings to Weddings,
Parties and Family Functions

The facilities briefly comprise of:

- Capacity in Main Hall - 160 Theatre Style
or 130 seated at tables
- Main Hall has permanent stage, adjustable lighting,
fully equipped sound system with hearing loop
- Separate meeting room and a lounge, club annexe &
sportsfield including changing rooms
- Modern kitchen/bar - licence available
- Main Hall air-conditioned. Other rooms centrally
heated
- Disabled facilities & double door access for loading
- Set in landscaped grounds with 70 car parking
spaces, including disabled



For further details please contact us or visit the website:

Tel: 01788 522444

Email: jane.bookings@dunchurchsportsandvhall.co.uk

Web: www.dunchurchsportsandvhall.co.uk

Rugby Road, Dunchurch CV22 6PN



THE
RUGBY FLOOR COMPANY

DUNCHURCH SHOWROOM

open by appointment

01788 815700

PARQUET | WOOD | KARNDEN | LAMINATE | RENOVATION



Beautiful floors for beautiful homes

3C SOUTHAM RD | DUNCHURCH | CV22 6NL

The Green Man

The Green Man has been at the business and social centre of our village for over 400 years and if walls had ears it would surely have many stories to tell. As a main coaching inn on the old London to Holyhead turnpike, it would have attracted the custom of many who were traveling the route, offering ale and perhaps a plate of bread and local cheese as sustenance.

However, an establishment such as this does not survive without evolving and now under new ownership, it will continue to write its own history. Led by new owner Steven Hardman and with

the continued stability of manager Joe and his team, The Green Man offers a new menu of good home cooking. There are long-term plans for improvements, and currently the garden area is being prepared to welcome families for the summer. Fully supporting the Dunchurch entry into Britain in Bloom, you can also expect to see a host of stunning, exterior floral displays.

There are exciting times ahead for this great village facility and with the continued support of the community, The Green Man will go from strength to strength.



The Green Man

ALL CHANGE AT THE GREEN MAN

New Management • New Menu

Serving superb freshly cooked quality food
and all at wonderful value for money prices



Daventry Road
Dunchurch
CV22 6NS

COME AND JOIN US Monday to Thursday 12 noon to 11.30 pm Easy
Friday to Saturday 12 noon to midnight parking
Sunday 12 noon to 11pm to rear



STEAK DEAL FOR 2

Two steaks and a bottle of
house red, white or rosé
starting from £28

Choose your
steak 8oz Rump
8oz Sirloin
10oz Ribeye
6oz Fillet

All supplied by butchers Joseph Morris from local farms • Quality Assured



Reserve a table 01788 810210 email: thegreenman@splendidpubgroup.co.uk
[facebook.com/greenmandunchurch](https://www.facebook.com/greenmandunchurch) www.thegreenmandunchurch.co.uk

Dunchurch Parish Council

By Gill Peacock, Parish Clerk



I have started to resume working at the library a couple of times a week, although I still work from home a good bit of the time. Please do get in touch if you would like to arrange a meeting or I can help in any way – contact details below. If you would like to contact a councillor direct, all of their email addresses are available on the DPC website by following the link www.dunchurchpc.org/download-category/declarations-of-interest

As I have mentioned previously, one of the most important tasks that the DPC looks at each week is a variety of planning applications and the Dunchurch PC responses can be seen via the minutes on the DPC website and the Rugby Borough Council Planning Portal <https://planning.agileapplications.co.uk/rugby/search-applications>

Planning is always a priority in Dunchurch and I have received a planning application for Dunchurch Park Hotel and Conference Centre – see application number R22/0193. Details can be found

Please get in touch with us if you would like to join our friendly Dunchurch Neighbourhood Development Plan steering group.

on the RBC planning portal – see above. Comments/responses need to be submitted to RBC by 20th May 2022.

Dunchurch Parish Council is in the midst of creating a Neighbourhood Development Plan and we would love to have more people involved, so if you are interested in your local community and planning development, you can become involved as little or as much as you would like, so please do get in touch with myself or Councillor Paul Le Poidevin by emailing paul.le-poidevin@dunchurchpc.org

It is extremely important to gain the views of the community in Dunchurch on development in and around Dunchurch. Planning rules are changing, and communities can set out what they want to see for the future of their community on planning matters. When the Neighbourhood Development Plan is adopted by Rugby Borough Council, it will be classed as a material consideration, which means that when planners consider all planning applications, they must take more notice of what we say on your behalf!

The DPC unfortunately received the resignation of Steven Kaudeur and we wish him well in his future endeavours.

Dunchurch PC is now short of councillors, so if anyone is interested in working to enhance the community in Dunchurch, please don't hesitate to give me a call and we can have an informal chat.

Finance is also a priority for the DPC and full details of income and expenditure can be found on the council website <https://dunchurchpc.org/agendas-and-minutes.php>

Blocked drains, damaged footways, flooding and potholes. You can report all of the above issues and lots more besides using a simple online system run by Warwickshire County Council. www.fixmystreet.com which allows you to pin-point the exact location and nature of the problem and forward the issue on to the relevant organisation to sort out.

You may have seen that work has commenced on the Thatched Bus Shelter with the setting up of the site. The thatch on the

roof has been removed and a temporary roofing membrane has been laid over the roof to protect the timbers. The contractor is stabilising the structure by adding temporary plywood to the internal walls before they insert four props at eaves level to allow the structure to be lifted.

The benching will be removed and paving slabs within the shelter taken up (at least two slabs are broken) so we will have to replace them with the same or

an alternative surfacing later in the project.

Dunchurch PC meetings are generally on the second Monday of the month at Dunchurch Community Library and the last ordinary meeting was on 9th May. The Annual Parish Assembly was held on Monday 25th April and all were welcome to come along.

If you would like to contact either me or the Chair of the DPC, please don't hesitate to call or email – see box below.



Clerk: Gill Peacock, 01788 817550 or 07474 705061 clerk@dunchurchpc.org

Chair: Tracey Price, tracey.price@dunchurchpc.org
www.dunchurchpc.org

Art in Dunchurch

We are delighted to announce that this June will see local artists from Dunchurch and the surrounding area gather once again to show their work during Warwickshire Open Studios Summer Arts Weeks 2022. With 18 artists signed up for the event in the centre of Dunchurch, it promises

to be a great venue to visit.

This will be a chance to meet the artists, see them at work and get inspiration from the wide variety of art forms on display.



Art in Dunchurch programme

Showing at Fosse House Gallery and the lovely gardens of Inglenook for seven days.

Coffee and cakes available in the courtyard café.

Plus Live Jazz on Saturday 18th June from 2pm to 4pm, and in a special late opening on Wednesday 29th June from 6pm to 8pm.

Everyone welcome.



Saturday 18th June	10.30am – 4.30pm	Live Jazz 2pm – 4pm
Sunday 19th June	10.30am – 4.30pm	
Wednesday 22nd June	10.30am – 4.30pm	
Saturday 25th June	10.30am – 4.30pm	
Sunday 26th June	10.30am – 4.30pm	
Wednesday 29th June	10.30am – 8pm	Live Jazz 6pm – 8pm
Saturday 2nd July	10.30am – 4.30pm	

Jane Archer - Artist

Original watercolours, prints, cards and cushions.

Find me @ Art In Dunchurch 18th June – 2nd July

Art In The Park, Leamington, 13th – 14th August

janearcher8@gmail.com

[f Jane Archer Artist](https://www.facebook.com/janearcherartist)

[@janearcherartist](https://www.instagram.com/janearcherartist)

www.janearcherart.co.uk



Classes and workshops at my studio in Toft Lane, Dunchurch.
See website for details

A Very Personal Commission

Somewhere on a wall in Dunchurch, this original artwork hangs and depicts the life of its owners. Having seen his work at the Art in Dunchurch event in 2019, Dazzler18 of



Destruction Arts was given this commission which includes many references to Dunchurch.

Originally from Liverpool but now living in Rugby, this talented artist rediscovered his passion for art through adult education watercolour classes. Now, through a series of friendly meetings, he works closely with families, couples or individuals establishing a rapport, enabling him to use their own everyday objects to evoke memories from their lives which he then transfers to canvas.

Dazzler18 explains, 'things that inspire me in the real world are urban decay, architectural structures, street art and how nature begins to reclaim its space in the absence of human activity. My recent

illustrative work is very colourful in its approach. First impressions of my work might be that it is sentimental, simple and obvious but often, when you look for it, there is a wry twist on the face value of the subject matter and I hope my sense of humour comes through in the various cheerful passages of each piece.'

Dazzler18 is only one of the many talented artists who will be at the Art in Dunchurch event. He is currently working on a series of four colourful Dunchurch paintings – *The Four Seasons of Dunchurch* – which will be available as cards and prints to buy.

Website: <https://destructionarts.com>

Instagram: [@dazzler18](https://www.instagram.com/dazzler18)

Facebook: [Destruction Arts](https://www.facebook.com/DestructionArts)

SOLSTICE

COFFEE SHOP & NURSERIES



Seasonal bedding •
hanging baskets •
perennials • shrubs • compost



Fresh
ground coffee
• homemade cake
• gifts and preserves



Monday: closed

Tuesday to Saturday: 10-4pm

Sunday: 10:30-4pm



Coventry Road, Dunchurch, CV23 9JR
01788 711797
solsticecoffeeandnursery



Loveyouloveyoga

YOGA CLASSES

YOGA RETREATS

YOGA REST FESTS

ONLINE YOGA



HATHA YOGA
VINYASA FLOW
YIN YOGA
YOGA NIDRA
YOGA FOR
BEGINNERS &
BEYOND

loveyouloveyoga.com
loveyouloveyoga@gmail.com
07738630862

LEAMINGTON HASTINGS BOWLS CLUB

ANY AGE, ANY ABILITY WELCOME TO PLAY

Outdoor Bowls April - September from 6pm

Indoor Short Mat Bowls September - April 2 - 4pm

Every Wednesday at Leamington Hastings Parish Hall

EXERCISE,
GOOD
COMPANY
AND FUN

NON
LEAGUE
CLUB

BOWLS
SUPPLIED IF
REQUIRED

PLAY TWICE - NO OBLIGATION

For more information call 01788 336913

The Dunchurch Oak Line

By Mike Judge, Trustee of Dunchurch Sportsfield and Village Hall



The Dunchurch Oak Line project to celebrate the Queen's Platinum Anniversary (and a unique contribution to FODS representing the seven midland counties in the Royal Horticultural Societies' Britain in Bloom competition) received enthusiastic support from ten organisations in the village who each sponsored one of the ten planted oak trees. The original idea was to plant the trees at the far end of the sports field. Unfortunately, the proximity of the Oak Line to the football pitch does not take account of the possible migration of the pitch towards the ditch at the top end of the sports field and the Trustees have examined the possibility of re-siting the trees elsewhere on the field. Sadly, the constraints of the ownership of the orchard site (Rugby School/Bilton Grange) and the proximity of this land to the goal line of the football pitch and the boundary of the cricket pitch also precludes that site.

I am actively pursuing an alternative site in the village to try and maintain the integrity of the original plan and the sponsors will be kept informed as to the progress. In the meantime, the trees will be kept in good order.

Although I am sorry our original plan has not worked out as we had wished, I can assure you of our determined efforts to find an alternative solution and we will keep you posted on new arrangements.





UNION CANAL CARRIERS LTD

Union Canal Carriers aims to set standards that few hire fleets can match. Because we are as enthusiastic as ever about "canaling" and have over 50 years hiring boats on the "cut" you know that you are in safe hands and can cruise with confidence.



Holiday Boat Hire



You can hire this boat for a day

For up to 12 people

Ouzel II is fully equipped with a galley, sink, gas hob, toilet, seating for 12 & buoyancy aids on request.

Great value! Great fun!

No experience required, Instruction given

Choice of scenic routes

Ideal for family or other social occasions

Have a canal-side picnic or lunch in a pub

Monday - Friday £150.00 incl

Weekends / bank holidays -

£195 incl

Telephone 01788 890784

Union Canal Carriers, Braunston Pump House, Dark Lane, Braunston, Northants NN11 7HJ

Tel: **01788 890784**

Email: info@unioncanalcarriers.co.uk

Web: www.unioncanalcarriers.co.uk



Follow us on Facebook



Follow us on Twitter

Social Media Courses in your own time, at your own pace

Each course includes explainer videos, tasks to complete as well as a completion certificate and the option of 121 support if you need it.

Current courses available

- LinkedIn Masterclass
- Keeping Up With Your Kids Online
- Social Media For The Overwhelmed



“
Louise's training on LinkedIn will give you a good overview and insight into all the features and options available for activity, but also a guide to how to get the most out of your time
”



Armadillo Social

www.armadillosocial.com/online-training

Dunchurch Allotment Association

By Paul Sanders

Scraping at the soil today, I again find another relic from the past. I now have quite a collection of clay pipe stems of varying bore size. As the allotment site has been in use for hundreds



of years and is marked on ancient maps as the 'poor plots' it should be of no surprise that these ceramic artifacts from a bygone age remain in the soil

unchanged. It makes me wonder what objects future generations will find in this same soil left by the current gardeners. The most likely finds will surely be plastic products.

In recent years members of the Allotment Association have been getting more conscious of and concerned about environmental issues. This led to the Association developing an environmental code of practice. This aims to promote actions that make the allotment site and the surrounding area more sustainable and enhance the natural environment, and to avoid practices that damage and degrade the site, the wider environment and its users.

Recent manifestations

of the policy include the sale of peat-free compost thereby

avoiding the degradation of peatland, an increasingly rare habitat, an important carbon sink and flood water regulator. The Association has also pushed for a carpet-free allotment. Carpets have been used for many years by some allotment holders as a sturdy ground cover for reducing weed growth. Unknown to the users, the carpets would have been releasing noxious chemicals potentially hazardous to human health and the environment.

Plastics in carpets don't rot away like organic materials, they physically break-down into smaller pieces with exposure to light and weathering. These secondary microplastics fragments that have broken down from larger objects can be harmful in soil environments. Research has already shown that microplastics are ingested by earthworms causing them to lose weight and reducing their biological fitness and lifespan.

The start of the new 2022 allotment season has seen the removal of all carpets from Dunchurch Allotments, which easily filled two large skips



Dunchurch and Thurlaston WI

Meetings are held at the WI hall, Mill Yard, Southam Road on the second Thursday of every

month at 2pm from September to April, at 7.30pm from May to July, and at various times in August depending on the activity.



Join us for: biscuits, board games, book club, cakes, campaigns, chat, coffee, crafts, darts, demonstrations, friendship, fun, history, jam, knitting, lunches, new-age kurling, popmobility, quizzes, speakers, tea, trips, visits – and happy to try other things...

November 2021 meeting: a taste of Indian culture

Onley Grounds Farm Shop and Butchery

How sad to see that Onley Oak Deli and Butchers and Onley Grounds Farm Shops have closed permanently from the 6th of April. Despite their greatest efforts, 'the sharp price rises in meat and services, the unfortunate impact of Dunchurch road works and a considerable reduction in customers at both stores since lockdown has ended, have had a significant impact.' In a heartfelt Facebook release, David and Lizzy Baker took the opportunity to thank their valued customers and to recognise their

wonderful staff, 'who we cannot thank enough for their loyal service and who have made the eight year journey of Onley Grounds Farm Shop Ltd possible, whilst enriching our lives and that of all our customers.'

The deli in Dunchurch was a wonderful local facility and it is a huge reminder to us all to support local or face the risk of losing it. We send David and Lizzy our

thanks for being such a delightful addition to our village and our hopes for a brighter economic future.





MALANCHA

EXCLUSIVE INDIAN RESTAURANT & TAKEAWAY



**ORDER
ONLINE AT**

www.malancha.co.uk

DISCOUNTED TAKEAWAY PRICE LIST

TEL: 01788 819141

Tel: 01788 811851

OPENING TIMES

7 Days a Week (including Bank Holidays) 5.00pm till late

2 Daventry Road, Dunchurch, Rugby, CV22 6NS

All major Credit/Debit and Bank Cards accepted.

TRADITIONAL STARTERS

Jalpari Pani Pat	£6.95
Fried king prawns marinated with turmeric, herbs and mustard paste for its own authentic taste.	
Paneer 🍗 Chicken/Lamb/Chilli	£5.75
Paneer stir fried with spring onion, mixed peppers, chilli and garlic accompanied with either chicken or lamb or just chilli.	
Aloo Cheese Bora	£4.50
Spicy mashed potato tikki with a melt in your mouth cheese filling, a starter to get your taste buds rolling.	
Murg-ee Kebab	£4.75
Minced chicken marinated in garlic, ginger, herbs and coated with golden breadcrumbs.	
Sheek Kebab	£4.25
Mince lamb roasted in clay oven	
Chicken or Lamb Tikka	£4.25
Roasted in clay oven.	
Tandoori Chicken (on the bone).....	£4.25
Roasted in clay oven	
Onion Bhajee 🍋🍋	£3.75
Somosa 🍋🍋	£3.75
Spicy meat or vegetables in crispy pastry.	
Nargis Kebab	£4.50
Scotch egg covered with minced lamb.	
Shashlick	£4.50
Chicken or lamb grilled in tandoor with onion, tomato and green pepper.	
Prawn Cocktail	£4.25
Reshmi Kebab	£4.75
Mince chicken shallow fried.	
Tandoori Jhinga	£6.95
Roasted king size prawns.	
Chicken Pakora	£4.25
Chicken fried with batter and breadcrumbs	
King Prawn Butterfly	£5.95
King prawn in spicy batter with breadcrumbs, deep fried.	
Tandoori Combination	£6.95
Mixture of tandoori dishes.	
Shami Kebab	£4.25
Spicy minced lamb steak fried.	

TANDOORI SIZZLING SPECIALITIES (main course)

Chicken or Lamb Tikka	£7.50
Garlic Chicken Tikka	£7.95
Tandoori Chicken (half on the bone) ...	£7.50
Tandoori King Prawn	£11.95
Chicken or Lamb Shashlick	£7.95
Tandoori Combination	£9.95
Paneer Tikka 🍗 (Indian Cottage Cheese)	£8.50
Fish Tikka Biran (Cod)	£9.95
Scottish Pink Salmon Tikka	£11.95

CONNOISSEURS STARTERS

Sheek Mach	£6.95
Rainbow trout roasted in clay oven.	
Chandu	£6.95
Silver pomfret fish roasted in clay oven.	
Masala Mach Biran	£6.95
Cod fish cooked on the grill with fried onions and tomatoes.	
Stuffed Roshun Pepper	£5.50
Green pepper roasted in clay oven with minced lamb or vegetables 🍋	
Murghi Kofta Kebab	£4.75
Chicken shallow fried in batter.	
Lamb Chops	£6.95
Spicy marinated chops grilled in clay oven.	
Chat Masala	£4.75
Chicken or potato 🍋 cooked in a tangy sauce.	
Paneer Tikka 🍗	£5.50
Indian cottage cheese roasted in clay oven.	
Jhinga Puree 🍋	£6.95
King prawn cooked in spices with spinach & served in puri bread.	
Chot-Poti	£4.75
Chicken or lamb cooked with chana dhal and green chilli.	
Chingri Puree 🍋	£4.95
Prawn with spinach cooked in spices & served in puri bread.	
Tandoori Stir Fry	£4.95
Chicken fried with onion, capsicum & mushrooms.	
King Prawn Bahar	£6.95
King prawn roasted in clay oven with capsicum, tomatoes and onions.	
Garlic Chicken Tikka	£4.95
Chicken roasted in clay oven with garlic.	

CHEFS SPECIALITIES

Khasia Lamb	£8.50
Mouthwatering Madras- hot lamb, slowly simmered and sliced with garlic and authentic herbs tip soft and melting.	
Masala Chom Chom	£11.95
A hot spicy dish with shelled king prawns, infused with ginger, garlic, capsicum and chefs own aromatic spices.	
Naga (HOT) Lamb, chicken or prawn.	£8.50
Authentic extra hot bangladeshi chilli (naga) in a bhuna style sauce. Giving a distinctive aromatic flavour.	
Shatkora	£8.50
Traditional bangladeshi shatkora (Citrus) vegetable from Sylhet cooked with lamb or chicken, enhancing the flavour.	
Handi	£8.50
Tenderised meat or chicken dish cooked to perfection with chefs own extensive aromatic blended spices and herbs	
Tawa	£8.50
Tawa cooked with onion, green pepper, strongly spiced and herbs, served on a sizzling pan.	
Lamb Chops Akbor-E	£10.95
A medium spiced bhuna dish served piping hot in a traditional Khorai dish, garnished with coriander & tomatoes.	

Allergy Guide

If you suffer from food related allergies please inform us at the time of ordering.

🍗 Dairy 🍋 Gluten 🍌 Nuts 🍋 Veg



SOUVENIR PROGRAMME

To celebrate Her Majesty's 70 years reign
QUEEN ELIZABETH II
PLATINUM JUBILEE 2022





EVENTS TO BE HELD IN DUNCHURCH

Thursday 2nd June



The Heath - 9.00pm for 9.45pm
Unveiling & Lighting of the new
Village Jubilee Signal Beacon
UK Nationwide event of over 1400
beacon lighting at the same time
See inside for details

Friday 3rd June



St Peter's Church, 2.30pm
Service of Thanksgiving with
Dunchurch Baptist Church,
Dunchurch Brass Band and
Dunchurch Voices

Sunday 5th June



Dunchurch Sportsfield
12 noon until 4pm:
The Dunchurch Village Jubilee
Big Picnic Lunch
Dunchurch Brass Band, and
entertainment including Birds of
Prey static display, Morris Dancing

ALL ARE WELCOME TO ALL EVENTS

Formed by likeminded residents who love
Dunchurch and its heritage and wish to protect and
enhance its environment in order to make the village
a better place to live in, work in and visit.

Village Green House, The Green, Dunchurch, CV22 6NX Tel: 07837 162114 Email: friends@dunchurch.org



FRIENDS OF
DUNCHURCH
SOCIETY CIO (FODS)





UNVEILING & LIGHTING OUR VILLAGE NEW SIGNAL BEACON – NATIONWIDE BEACON LIGHTING EVENT LIGHTING UP TIME 9.45PM ON THE HEATH



*Signal beacon warning of the
Spanish Armada's approach*

Signal Beacon History

Beacons were fires lit at well-known locations on hills or open places, used for signalling over land that enemy troops or ships were approaching, in order to alert defences. As signals, beacons are an ancient form of optical telegraph and were part of a relay league.

Systems of this kind have existed for centuries over much of the world. The ancient Greeks called them *phryctoriae*.

Beacons and bonfires are also used to mark special occasions and celebrate events (Dunchurch may use our beacon on bonfire night – November 5th)

Now there are over 1400 beacons across the four British nations.

The Dunchurch Beacon

Our Dunchurch Beacon basket has been handmade in steel and in the traditional manner by a local Blacksmith, Oliver Boyett but has been designed to run on LPG bottled gas and will not burn logs.

The National Jubilee Beacon Lighting event

There is a UK national jubilee lighting of the beacons event to mark the Queen's Platinum Jubilee celebrations. In Dunchurch we will be part of this event celebrating both the installation of our new beacon and the Queen's Jubilee.



THE QUEEN'S
PLATINUM JUBILEE
BEACONS
2ND JUNE 2022



Beacon lighting ceremony programme

8.45pm If you would like to meet at the Dun Cow for a celebratory drink and to toast the Queens 70 year Reign.

A Piper will then pipe the assembled community group from The Dun Cow along the Rugby Road to the beacon on The Heath and join those already assembled, The Mayor of Rugby, Chair of Dunchurch Parish Council, Cllr Tracey Price and Parish Councillors, A local piper - Vincent Deery will play *Diu Regnare* – a new piece written for the Jubilee by Pipe Major Stuart Liddell

Dunchurch & District Brass Band bugler, Colin Worrall will play *Majesty* to fanfare the lighting of the beacon

Some words from the Mayor of Rugby, Parish Council Chair, Tracey Price and St Peters Vicar, Rev Pat Townshend will say some words

**9:45pm Light the beacon
Piper to pipe, Bugler to play
Those gathered will sing the National Anthem with piper and bugler
10:30 pm switch Beacon off.**

Our thanks to Dunchurch Parish Council for their enthusiasm and support for this project

THANKSGIVING St Peters Church, Friday 4th June 2.30

There has been a church in Dunchurch for more than 1000 years. St Peters Church, built in the 1300s replaced a Saxon church and is a wonderful Parish church for Dunchurch.

We are delighted to have music with our resident organist/musical director, Richard, Dunchurch Brass Band and the charming Dunchurch Voices Ladies Choir, performing for the first time since the end of the COVID pandemic. Bellringing completes a delightful musical treat.

The service will be led by Parish vicar – The Rev Patricia Townshend
You are invited to join together for a refreshing cup of tea after the service.

Our thanks go to: Rev Patricia Townshend, Richard (Organist/ Musical Director), Dunchurch Brass Band, Dunchurch Voices, St Peter's Bellringers



THE DUNCHURCH VILLAGE JUBILEE BIG PICNIC LUNCH THE SPORTSFIELD 12 NOON – 4PM SUNDAY 5TH JUNE

History of our Sportsfield

Lord Waring (1860-1940) lived at White Lodge, Vicarage Lane Dunchurch. He was much decorated for the work he did during World War II in organising the manufacture of aircraft engines.

He was the owner of considerable land in the Dunchurch area, all purchased from the estate of the Duke of Buccleuch.

He created a trust for the area we now call the Sportsfield to provide the people of Dunchurch with facilities to enjoy sport and recreation.

In the 1980s the Trustees of the field handed the trust to the DPC so to keep the management in the management of the community.

As can be seen the Trustees have

been proactive and we now have a wonderful village hall on the site and a wide range of sports are enjoyed by the community on the site used for various events.

The big picnic is the latest community event to be held and organised by The Friends of Dunchurch Society for the enjoyment of all in the village.

There will be entertainment with a selection of music from the Queen's 70 year reign, a display of locally kept Birds of Prey, three performances by Dunchurch Brass Band and a performance by Coventry Morris Men

Our thanks to: Picnic host - Mike Judge, PA system - Les Pearce, The Trustees of The Sportsfield, Coventry Morris Men and Dunchurch Brass Band



YOUR ENTERTAINERS ARE:

Coventry Morris Men

Coventry Morris Men are one of the oldest revival sides in the country and date from 1931 with a break between 1940 and 1950. We mainly dance what we call "Cotswold" style dances most of which were collected in villages in Oxfordshire and Gloucestershire in the early years of the 20th century. Some of the dances were still being performed on a more or less regular basis at that time whilst others were collected from old men who had last danced in the late 19th century. The main dancing season seems to have been around Whitsun. We also dance the separate winter Morris tradition from the Welsh Border counties and sword dances from Yorkshire and Teeside.



JRCS Falconry

Based near Rugby, J.R.C.S Falconry has a private collection of over 30 different species of birds. From the beautiful Barn Owl and the hunting Hawk to the feisty Falcon, canny Kestrel and the glamorous Golden Eagle, there's sure to be a bird for everyone.



J.R.C.S. Falconry provides static and flying displays throughout the year. We are available for shows, fetes, children's parties, after dinner speaking and talks and we regularly visit schools, clubs and

garden centres. With our selection of eagles, falcons, hawks and owls, we provide a display to be admired. Whether static or flying, the birds are impressive and thrill all that come to see them.

continued...

continued...



Dunchurch Brass Band

Most people don't realise there's two bands in Dunchurch! The Band was founded by Colin and Janet Worrall in December 2006.

Mr and Mrs Worrall have been connected with Bands for many years. Mr Worrall's family were the founders of another Brass Band (Dunchurch band), which Colin belonged to for

many years along with Janet.

After a 2 year break they decided to start a new Brass Band in Dunchurch. The band started off with six players. We've now got 16 players and Musical Director Mr Gary Smallwood, we've since played at Brass in the Park in Jephson Garden, Leamington and Abington Park, Northampton and Galanos House, Southam

Organised by The Friends of Dunchurch Society CIO In conjunction with

Dunchurch Parish Council* St Peter's Church* Dunchurch Baptist Church*
Dunchurch Festival Group* Dunchurch Pantomaniacs* Dunchurch WI*
Dunchurch Sportsfield* Dunchurch Traders* Dunchurch Voices, Ladies Choir*
Dunchurch & District Brass Band* Barrie Lambert Photography

Acknowledgements

Oliver Boyett (O & CO Blacksmiths), Birmingham Burners,
Rob & Ross (Carlton Contractors), Davie Izzard (DJI Installations),
Vincent Deery (Piper), Rugby Borough Council, Coventry Morris Men, JRCS Falconry

Formed by likeminded residents who love Dunchurch and its heritage and wish to protect and enhance its environment in order to make the village a better place to live in, work in and visit.



**FRIENDS OF
DUNCHURCH
SOCIETY CIO (FODS)**



Village Green House, The Green, Dunchurch, CV22 6NX Tel: 07837 182114 Email: friends@dunchurch@gmail.com

TRADITIONAL MAIN COURSE

Prawn	£7.95
Chicken	£7.50
Lamb	£7.95
Chicken or Lamb Tikka	£8.50
Tandoori Chicken (Off the bone)	£8.50
King Prawn	£10.95
Keema (minced lamb)	£7.50
Paneer ①	£8.50
Mixed Vegetable V or Mushroom V ..	£7.50
Fish Tikka	£9.95

All of the above items can be cooked using a sauce of your choice from the following selection:

CURRY

Basic medium spiced sauce.

KORMA **N** ①

Very mild sauce cooked with coconut & almond.

MALAYAN ①

Cooked with pineapple, in a mild smooth sauce.

BHOONA

Cooked with onions, green peppers, tomato & fresh herbs

DOPEAZA

Medium dish cooked with onions.

ROGAN JOSH

Cooked with green herbs & spices, garlic, onions & tomatoes.

DANSAK

Cooked with lentils in a thick, hot, sweet & sour sauce.

PATHIA

Cooked with tomatoes, onion, fresh herbs & spices in a hot & sour sauce.

MADRAS

Cooked in a fairly hot spiced sauce.

SAAG WALLA

Cooked in garlic and spinach sauce.

VINDALOO

A very hot dish made from red chilli.

Any vegetable can be added to your dish, such as mushroom, potato, spinach, cauliflower, chick peas, bhindi, lentils, mixed vegetables and peas for an extra 65p.

POPULAR BALTI DISHES

The strength of these dishes can be prepared to taste.

You can ask for mild, medium, slightly hot, madras or vindaloo hot.

Mixed Vegetable Balti V	£7.50
Keema Balti	£7.50
Chicken Balti	£7.50
Lamb Balti	£7.95
Chicken or Lamb Tikka Balti	£8.50
Tandoori Chicken Balti (Off the bone) ...	£8.50
Paneer Balti ①	£8.50
Prawn Balti	£7.95
King Prawn Balti	£11.95
Fish Tikka Balti (Cod)	£9.95

CELEBRATION SPECIALITIES

Some fish dishes may contain bones

Sunar Bangla Mach	£9.95
Bengal fish cooked with aubergine and a touch of green chilli.	
Tandoori Trout Masala N ①	£9.95
Rainbow trout cooked in a mild creamy sauce.	
Roop Chand Masala N ①	£9.95
Silver pomflet fish cooked in a mild creamy sauce.	
Fish Bengal Masala N ①	£9.95
Bengal fish cooked in mild creamy sauce.	
Murghi Masala N ①	£8.50
Chicken cooked with mince lamb, egg and tomatoes.	
Spicy but mild dish.	
Chicken/Lamb Tikka Masala N ① ...	£8.50
Cooked in a mild, creamy sauce.	
Tandoori King Prawn Masala N ① ...	£11.95
Cooked in a mild creamy sauce.	
Jhinga Zafron N ①	£11.95
King prawn cooked in a mild sauce with zafron.	
Tandoori Murghi Chana Palak	£8.50
Chicken cooked with chick peas & spinach, medium.	
Pasanda Nawabi N ①	£8.50
Lamb cooked with pistachio, a very mild dish.	
Dakeswari	£8.50
Lamb cooked in a spicy sauce. Slightly hot.	
Badami N ①	£8.50
Chicken or Lamb cooked with various nuts and cream, a very mild dish.	
Rajswari	£8.50
Chicken cooked in a spicy sauce. Slightly hot.	
Makani N ①	£8.50
Chicken or Lamb cooked in a slightly hot sauce with plum tomatoes and cheese.	

To suit your taste the next selection of dishes may be cooked with any of the following.

Mixed Vegetables V	£7.50
Chicken	£7.50
Lamb	£7.95
Chicken or Lamb Tikka	£8.50
Tandoori Chicken Balti (Off the bone) ...	£8.50
Paneer ①	£8.50
Prawns	£7.95
King Prawns	£11.95
Fish Tikka (Cod)	£9.95

ZALFREZI

Cooked with capsicums, onion, fresh green chillies and fresh herbs in a hot sauce.

ACHARI

Cooked with homemade pickles, medium with tangy taste.

GARLIC MASALA

Cooked with garlic, spicy or medium.

SOUTH INDIAN CHILLI MASALA

Cooked in a smooth, spicy hot sauce.

JAAL JHUL

Cooked Bengal style with garlic, cinnamon and herbs. Hot and spicy.

ROTHON MASALA **N** ①

Cooked with fruit cocktail and cream, very mild dish.

KARAH

Cooked with tomatoes, onion and capsicum, spicy medium dish.

SELECTED BIRIANI DISHES

You may ask for a different strength sauce, madras, vindaloo, etc

Chicken.....	£8.95
Lamb or Prawn	£8.95
Chicken or Lamb Tikka	£9.95
Tandoori Chicken (off the bone)	£9.95
Paneer Tikka ①	£9.95
King Prawn	£10.95
Mixed Vegetables v	£8.95
Special Combination.....	£10.95

Persian or Malayan extra 65p. Extra Mushroom 65p

EUROPEAN DISHES

Following dishes are served with chips

Sirloin Steak	£13.95
Chicken Omelette	£9.95
Mushroom Omelette	£8.95
Prawn Omelette	£9.95
French Fried Chicken.....	£9.95
Fried Scampi	£9.95

VEGETARIAN COURSE

To accompany your main meal we have selected the following vegetable dishes. We recommend them to compliment the meat that you order.

	Side	Main
Saag Cream Mild ①	£3.95	£7.50
Vegetable Bhajee v.....	£3.95	£7.50
Mushroom Bhajee v.....	£3.95	£7.50
Bombay Aloo v.....	£3.95	£7.50
Saag Bhajee v.....	£3.95	£7.50
Saag Paneer v ①.....	£3.95	£7.50
Aloo Gobi v.....	£3.95	£7.50
Vegetable Curry v.....	£3.95	£7.50
Saag Aloo v.....	£3.95	£7.50
Bhindi Bhajee v.....	£3.95	£7.50
Cauliflower Bhajee v.....	£3.95	£7.50
Tarka Dhall v.....	£3.95	£7.50
Chana Bhajee v.....	£3.95	£7.50
Mottar Paneer Mild ①	£3.95	£7.50
Baigon Bhajee v.....	£3.95	£7.50

RICE

Lemon Fried Rice	£2.95
Garlic Fried Rice	£2.95
Chilli Fried Rice.....	£2.95
Aloo Fried Rice	£3.50
Steamed Basmati Rice	£2.75
Pilau Rice	£2.95
Fried Rice	£2.95
Egg Fried Rice.....	£3.25
Vegetable Pilau Rice.....	£3.25
Special Pilau Rice	£3.25
Mushroom Pilau Rice.....	£3.25
Keema Pilau Rice.....	£3.50
Chana Pilau Rice.....	£3.25
Rothon Pilau Rice.....	£3.25

NAAN & SUNDRIES

Special Stuffed Naan ① ②	£3.50
Finely chopped chicken tikka pieces topped with green chilli and cheese.	

Stuffed Fruit Naan ① ②	£3.50
Naan bread stuffed with small pineapple pieces, giving it a fruity taste.	

Naan ① ②	£2.75
Keema Naan ① ②	£3.25
Garlic Naan ① ②	£2.95
Peshwari Fruits & Nuts Naan ① ② ③	£3.25
Kulcha Naan ① ②	£2.95
Cheese Naan ① ②	£3.25
Chilli Onion & Coriander Naan ① ②	£2.95
Tandoori Roti ②	£2.25
Paratha ②	£2.95
Stuffed Paratha ②	£3.25
Chapathi ②	£1.95
Puri ②	£1.95
Raitha ①	£2.50
Popadom.....	£0.90
Masala Popadom	£0.95
Chutneys/Pickles.....	£0.70
Tamarind Sauce	£0.70
Selection of Chutneys.....	£1.95
Chips	£3.25

TERMS & CONDITIONS FOR DINING IN

Each person must order atleast one main course; Only one promotional discount/voucher can be used per group/table; Promotions cannot be used in conjunction with other offers; Vouchers are not valid on Friday, Saturday, Bank Holidays, Valentines Day, Mothers Day, Fathers Day, Easter Sunday, Easter Monday, Christmas Eve, Christmas Day, Boxing Day, New Years Eve or New Years Day.

Save Dunchurch Action Group

By Mike Judge MBE, Former Chairman

The Save Dunchurch Action Group was formed approximately six years ago to draw the attention of the local authorities and developers to some of the more significant problems with the Local Plan.

Feeling now that our main concerns have been aired and sadly, despite our best efforts, largely ignored, the main rationale for Save Dunchurch has now passed. Accordingly, we will no longer act under this banner and have divided

our remaining financial resources to St Cross Hospital and the Friends of Dunchurch Society (just short of £350 each) to help them continue with their excellent work.

We thank all our supporters and no doubt as individuals, we will continue to keep an eye on the developers and authorities to represent what we believe to be in the best interests of our community.



District of Dunchurch Brass

Our numbers are growing but we would like to grow even more. We invite brass players who might fancy a change or starting up again to join us in our relaxed but hard working rehearsals on Wednesday

evenings from 7.45 to 10.00 at our band room, 15 Rugby Road, Dunchurch, Rugby CV22 6GP. See our website www.districtofdunchurchbrass2006-web.info for details. We would particularly welcome cornet players, basses and

euphs but all other instruments would be most welcome.

Contact Lorraine Goodacre 07963 144704 or Gary Smallwood, our experienced MD, on 07876 688210.



Dunchurch Yesteryear

One of the excellent facilities we have right in the heart of the village is the Dunchurch Social Club and this interesting article from The Rugby Advertiser, April 18th, 1952 (courtesy of Paul Waller) celebrates the pulling of the first pint in the newly built building 70 years ago.

Opened by the Mayor of Coventry

Heavy Blitz Recalled

'When bombs fell on Dunchurch in early November 1940, the night of one of Coventry's big raids, they brought tragedy to the village. They caused the death of two men, the only fatalities in the village caused by enemy bombing during the whole war. They destroyed, too, the village's own working men's club. Had it not been for that tragic night, however, Dunchurch would not be able to claim to-day what must be one of the most up to date village clubs in the whole area.

This £3,000 club, a single storey building facing the Square, has arisen on the site of the old, bombed building. On Tuesday evening it was officially opened, before a large gathering of local people, by the Mayor of Coventry (Coun. Harry Weston). His presence was of the link of human friendship forged between the peoples of Coventry and the peoples of Dunchurch through their joint suffering from enemy bombs that night in 1940.

Welcome was extended to the Mayor

and Mayoress of Coventry by Mr. T. Duffin, the chairman of the Dunchurch and Thurlaston Working Men's Club. After introducing the guests, he recalled the death of the two members in the bombing raid and asked for them to be remembered in a moment of silence. He then spoke of the decision about eighteen months ago to start the re-building of the old club. Taking all obstacles in their stride the committee had achieved their aim and they now had a new club. But it was still largely to be paid for. Towards the £3,000 they had the war damage grant of about £800 and the Development Fund had brought in £59 to date. Some of the work in the club, the instalment of fittings and the provision of a billiards table, had involved no expense because of the generosity of certain members.

Mutual Trials

The Mayor Coventry, in declaring the club open, remarked on the bond between Dunchurch and Coventry through their mutual trials in war. He felt it was a proud moment for the village to see their club rebuilt and

went to stress that it was not buildings that really mattered—but the spirit of the people using them. He thought the enthusiasm shown in the re-building augured well for the future of the club. The members also had a fine tradition to carry forward. The village had a long history, it was an important village, and the club was of considerable consequence in the village life.

The club was a monument to self-creation; it was a place to be admired. People could go there and share their troubles and experiences, their victories and failures, and they felt better for it. The club was theirs. It was also for the benefit of their friends and neighbours, visitors and villagers, and it added fullness to village life.

Ald. A. L. Adkinson, J.P., the chairman of the local parish council, thanked the Mayor and expressed his own pride in the village and its people. Whatever they undertook in Dunchurch they did well. The Rev. R. Stott, the vicar of Dunchurch, seconded the vote of thanks and spoke of the Mayor's association with another village organisation - the Sunset Home. The vicar then said a prayer and pronounced his blessing on the club.

At the end of the official opening ceremony Miss Jean Bark, the daughter of the secretary of the club, Mr. H. Bark,

presented the Mayoress (Mrs. Weston) with a bouquet.

The First Pint

Following the ceremony, the Mayor drew the first pint of beer. Drinks were then served to members and the first glass of beer was auctioned for the club's benefit for £1. The Mayor was also enrolled as a member and his name added to the membership roll which totals about 160.

With around £2,000 to find to pay for the building the club officials hope to gain the money by steadily increasing their membership. Looking ahead they hope eventually to add even more to the present club amenities, which include a large billiard room, a lounge and a bar. The additions will come when it is possible to add another storey to the building. Already plans have been drawn up for the new floor but planning permission and a licence for materials are required.

The former club was accommodated in a house which was originally leased to the village by Lord John Scott, and for the first fifty years of its existence was known as "Lord John Scott's Reading Room." When the Buccleuch estate was broken up this building was purchased and it then became the working-men's club.

To book this facility, email dunchurchsocialclub@gmail.com
or call 01788 811177



Dunchurch Nursery

Purpose built Nursery attached to Dunchurch Infant School.

We have 15-30 hours funded spaces available in our welcoming and inclusive, Ofsted 'Outstanding', provision.



Ofsted

'Outstanding'
judgement

To arrange a viewing please visit our Facebook page or call Natalie Herbert, Nursery Manager on 01788 810292

www.dunchurchinfantschoolandnursery.co.uk

Dunchurch Social Club



- Open to the public and welcomes families
- Two function rooms available to hire free of charge
- Beer garden

The Square, Dunchurch, Rugby CV22 6NU

Tel 01788 811177



Follow us on Facebook for up-to-date promotions and events

Doctors in Dunchurch, Part 14: The Australian Years

By Dr Ian Czerniewski, Dunchurch GP since 1991 and Dr John Airlie Hunter, Dunchurch GP 1963–1998

Arriving in Dunchurch in 1997, Dr David Carne quickly became an integral part of the practice, contributing enthusiasm and ideas from his education in Melbourne and experience in practices in Australia and Surrey. His dedicated work ethic and shrewd clinical acumen were respected by colleagues, while his relaxed antipodean twang and friendly manner were immediately popular among patients and staff. He soon developed a loyal following among patients.

Dr Carne drove the development of training at the practice and helped to maximise the potential of the surgery building with extensions and adaptations. He also contributed to the ongoing computerisation of the practice and the transition to paperless electronic records in 2004.

This was also the time when the new GP Contract came into effect nationally and primary care had to negotiate and adapt to changes. Dr Carne represented Rugby GPs at the Warwickshire Local Medical Committee (as Dr Hunter had done), while Dr Czerniewski was one of the first GP Appraisers in Rugby and Commissioning Lead for the Rugby PCG (Primary Care Group). The PCG structure was an

early attempt by central

government to enhance collaboration between practices which has now evolved to the current Primary Care Network (PCN). Despite the endless changes and reconfigurations, the noughties were an optimistic period in the NHS as resources appeared to improve.

We obtained cryosurgery equipment and extended the scope of minor surgery and joint injections. Dr Roberts developed her women's health and family planning clinics at the practice. Dr Reynolds became an accredited GP Trainer and has led the GP Training programme at the practice for many years.

When Dr Carne announced his return to Melbourne, the Practice reflected gratefully on nine busy and productive years. Although it was suggested that England's Rugby World Cup triumph over Australia in 2003 or the glorious England Ashes win of 2005 had been too much to bear and played a part in his decision, he had taken these Aussie setbacks surprisingly well! He left Warwickshire on a wave of goodwill and affection.



Dr Carne with members of the practice team



SMITH'S

GARDEN CENTRE

*An Independent & Family Owned,
Plant Focused Garden Centre*



Summer Bedding Plants

Our Summer bedding plants will be available from Mid/End of April onwards and will include a wide range of flowering annuals such as Begonias, Geraniums, Pack Bedding and Trailing Basket Plants.



Garden Furniture

Our Hartman garden furniture is now available to buy in store while stock lasts. We have stock of both round and corner sets as well as parasols, storage boxes, egg chairs and more...

STONELEIGH RD, BAGINTON, COVENTRY, CV8 3BA
02476 303 382 | WWW.SMITHS-GARDENCENTRE.CO.UK

Dunchurch Schools Federation News

By Joss Andrews, Executive Headteacher

Over the past few months, we have found further opportunities to re-connect with the wider Dunchurch community. Our first visit to St. Peter's church in over two years to celebrate Easter was a highlight of the year so far. Attending St. Peter's at such an important time of year was made even more special by the readings undertaken by pupils of all ages, the songs and hymns that were sung with such vibrancy and the fantastic performances by the music ambassadors. All in all a very special two mornings, made possible by the extensive volunteer support, the commitment of the staff and the welcome received from Reverend Pat and Steve.

The schools have also recently contributed to The Dunchurch Oak Line which gave our pupils, the Dunchurch residents of the future, the chance to say, 'we were part of that!' and to be proud of their role in shaping a little bit of the history of Dunchurch village.

In a similar vein, we are looking forward to celebrating Her Majesty's Platinum Jubilee at the end of May/start of June. The Federation is busily planning for a final themed week to commemorate the Queen's achievements and longevity, culminating in a street party, which will be held on the school grounds. This is an ex-

cellent opportunity for the school to explore British values and to be thankful for what we have, reflecting on the challenges that are faced by so many at this current time.

Pupils, staff, governors and I are all very much looking forward to what the summer term brings and are hopeful that it gives us all further chances to connect, to reflect and to celebrate.



1st Dunchurch Scout Troops

Congratulations to the Scouts who have raised over £2,000 for Hope 4 by sleeping under cardboard boxes on the Stocks Green. They and their leaders are to be commended for not only raising the funds but also for highlighting the plight of the homeless. Well done all.



www.justgiving.com/fundraising/dunscout-hope4-march2022



Sleeping 'rough' on a cold night in March



LMC

Physio & Fitness

NEW FITNESS CLASSES IN BILTON VILLAGE



PILATES
POSTNATAL & ANTENATAL PILATES
HIIT
CIRCUIT TRAINING
STRETCH & MOVE
BEGINNERS FITNESS
OVER 60'S FITNESS
PERSONAL TRAINING (1:1 & GROUP)

SMALL GROUPS OF MAXIMUM OF 7

BOOK ONLINE :LMCPHYSIO.CO.UK

CALL: 01788331570

EMAIL ADMIN@LMCPHYSIO.CO.UK

13C THE GREEN BILTON CV227LZ



Friends of Dunchurch Society Neighbourhood Watch Scheme

In association with Rugby Borough NHW Scheme



You tell us and we'll spread the word

At the time of writing, the Dunchurch Neighbourhood Watch team are very pleased to report that very little crime has been reported to us in recent weeks. We are now wondering if we are not receiving all the information that we might. This could be true of petty crime that people are unwilling, or can't be bothered to report to the police.

We understand that people may not want to 'wash their dirty linen in public' and we want you to understand that we would NEVER identify specific people or exact locations of local crime.

We would always check with you about wording before passing on information via social media or by email. So,

PLEASE LET US KNOW IF PETTY CRIME AFFECTS YOU OR YOUR LOCALITY

The more we can alert people, the less likely it is that the crime would continue or spread.

We all need to help each other, so please let us know of any problems by emailing fods.nhwatch@friendsofdunchurch.org in confidence. With your help we will continue to keep levels

of crime low in Dunchurch.

To contact your local Rugby Rural South Safer Neighbourhood Team police office:
email: rrs.snt@warwickshire.on.police.uk or

Tweet [@RugbyCops](#)

Telephone: 999 in an Emergency, 101 to report a crime and suspicious incident or 01788 853851 to contact the Team directly (not for reporting crime).

Thank you.



Answers to Who's That Baby? on p40
Photos along the top Lady Diana Spencer, Prince William, Prince Charles
Along the bottom Prince Phillip, Princess Elizabeth, Elizabeth Bowes-Lyon, Prince Louis, Prince George, Princess Charlotte
Answers to Royal Anagrams on p35
1. Head of the royal family
2. Seventy years service
3. Platinum jubilee
4. Elizabeth Windsor
5. Head of the Commonwealth
6. Her Majesty
7. Defender of the Faith



THINKING ABOUT SELLING?

With 30 years combined experience at Fine and Country, and extensive local knowledge, if you are considering selling your property we would be delighted to help you.



The service and support that Nicola & Liz gave us during our recent move was nothing short of superb and really emphasises that you get what you pay for. I understand that Fine & Country are dearer than most agents, but they really aren't like most other agents. The way they ensured that our move went smoothly represented real value for money and we would have no hesitation in using them again in the future. - J Walker.



Elizabeth and Nicola
Partner Agents

Elizabeth Teasdale: 07811 121363
Nicola Loraine: 07976 453573
Direct Line: 01788 820078
lizandnicola@fineandcountry.com



For more information visit
fineandcountry.com

Rheams (Plumbing and Heating) Limited

Tel. 01926 428752

FAMILY RUN BUSINESS ESTABLISHED IN 1967

- GAS SAFE REGISTERED ENGINEERS
- 24 HOUR CALL OUT SERVICE,
7 DAYS A WEEK
- RUGBY BASED ENGINEERS
- FREE INFORMATIVE CONSULTATIONS
- LARGE/SMALL SCALE RENOVATION
- NEW BUILDS
- BOILER REPLACEMENTS/REPAIRS
(natural gas, LPG and commercial)
- LANDLORDS' CHECKS
- POWERFLUSH SERVICE
- BATHROOM INSTALLATIONS
- ALL GENERAL PLUMBING

www.rheams.co.uk
email: info@rheams.co.uk

Wanda Fashions



Visit us at: Shopappy.com/rugby/Wanda-fashions-atthegreendunchurch



Wanda Fashions@TheGreenDunchurch

The Old Bank House, The Green, Dunchurch CV22 6NX
T: 01788 522021 E: paula@wandafashions.com www.wandafashions.com

St Peter's Church

By Reverend Pat Townshend

My family and I met the Queen in 1990 outside St John's Cathedral in Bulawayo, Zimbabwe. We were lucky enough to be at the front of the crowd and she stopped to talk to us. It was caught on camera by a local journalist and is a treasured photograph in my collection. Perhaps many here have a similar memory, but for us in the 'colonies' it was a particular pleasure.

I don't suppose there are many people who remember a time before Queen Elizabeth's coronation though some here in Dunchurch may have been teenagers when she came to the throne. When I reflect on her reign I think of Jesus' parable of the house on the rock:

'Everyone then who hears these words of mine and acts on them will be like a wise man who built his house on rock. The rain fell, the floods came, and the winds blew and beat on that house, but it did not fall, because it had been founded on rock.'

The Queen's faith in God is well known and I believe it is this that has borne her through 70 sometimes very tumultuous years. She has built her life on the rock of her faith, a faith that has underscored her life of commitment and service.

In St Peter's churchyard, a line of trees

has been planted to celebrate the jubilee and I can't think of a more suitable tribute. Those of us who were

there when they were planted may not see them

grow to their full stature, but they will stand as a reminder to future generations of a reign built on faith in God and a Queen who put service to her people before personal considerations. We can all thank God and be grateful.



Reverend Pat Townshend blessing the new saplings

Royal Anagrams

Can you work out these anagrams that all have a connection to Her Majesty the Queen? Good luck!

Answers are on page 33.

1. Offer the hay lady a limo 4,2,3,5,6
2. Very icy as verse tense 7,5,7
3. I pile I jumble tuna 8,7
4. Idle baths win zero 9,7
5. He came and flew hoot moth 4,2,3,12
6. Hey jam rest 3,7
7. He heard toff feet din 8,2,3,5

Celebrating 70 years



BUSINESS CARDS
100 FOR £10.00*
Printed single sided on 350gsm card



A5 LEAFLETS
500 FOR £25.00
*Printed full colour, single sided on 150gsm stock
READY NEXT DAY!





The Printing Works

SIR FRANK WHITTLE BUSINESS CENTRE,
GREAT CENTRAL WAY, RUGBY CV21 3XH
EMAIL: INFO@THEPRINTINGWORKS.CO.UK



Like us on
Facebook

TELEPHONE: 01788 543700
theprintingworks.co.uk

*All special offer prices are from artwork supplied in a print ready format with bleed (where required). All prices exclude VAT (where applicable).



Anne-Marie's Florist

61 The Square | Dunchurch | Rugby | Warwickshire | CV22 6NU






Celebrate our Sovereign's 70 year reign with:

Country Style bouquet a selection of red, white & blue stems from £20 or the Platinum bouquet with white, green and memory lane roses from £40.

Country artificial Platinum door wreath £25 or the Jubilee Red, white and Blue door swag option at £12.

Established for 35 years and situated in the heart of Dunchurch village

Email: amflorist1@outlook.com
www.facebook.com/AnneMarieFlorist
[anne_maries_florist_dunchurch](https://www.instagram.com/anne_maries_florist_dunchurch)

01788 521 881
www.amflorist1.wixsite.com/website

Dunchurch Baptist Church

By Rev Dave Woods

At long last, we're fully installed into our new building on Coventry Road and it's been lovely to welcome so many visitors into the church at various events to celebrate the opening. The long wait was worth it! We thank God for enabling us to successfully complete such a major project and we hope the new facility will benefit not only the members of the church but also the whole community.

For me personally, it's very pleasing for the work to be completed in time to enjoy a few weeks in the new building before my retirement on 1st May. I will have been Minister of the Baptist Church for nearly 14 years, and Lesley and I will

take with us many fond memories of life in Dunchurch, especially the many people we've made friendships with. We won't be leaving the village till later this year so I'm sure we'll find plenty of opportunity to say some final farewells.

Meanwhile the Church has already begun the process of calling a new Minister, though undoubtedly there will be a period of time without anyone in post. Nevertheless, church life will continue much as it is, with many willing volunteers contributing as always. The

church doors are always open to newcomers! The 'Welcome' sign on the front door means exactly what it says! Do feel free to join us on any Sunday for our morning service at 10.30am. For more details of what we do, see www.dunchurchbaptistchurch.org.uk or send a message to secretary@dunchurchbaptistchurch.org.uk.

The main body of the church set up and ready for the official opening on 12th March





VISIT AND ENJOY

Historic Dunchurch

Heart of England in Bloom Gold winners 2019–2021

Finalists in Britain in Bloom 2022

Village shops and businesses look forward to welcoming you

**SPAR – Dunchurch
Service Station**
Coventry Rd
01788 814770

**Dunchurch
Post Office**
Southam Rd
01788 819951

**Rowlands
Pharmacy**
The Square
01788 814770

**Ann Marie's
Florist**
The Square
01788 521881

**Lucy Locket
Hair Salon**
The Green
01788 813718

**Wanda
Fashions**
The Green
01788 522021

**Soft Furnishings
by Mickie**
The Square
01788 813334

**Carter & King
Estate Agent**
The Square
01788 550066

**Courtyard
Dental**
Daventry Road
01788 519831

**Fosse House
Gallery**
Coventry Rd
01788 877077

**Mops
Hair Studio**
Coventry Road
01788 810452

**Truly Scrumptious
Nail & Beauty**
The Square
01788 815113

**ANEW Aesthetics
Beauty Salon**
Southam Road
01788 817070

**Rugby Flooring
Co**
Southam Road
01788 815700

**The Cake
Gallery**
Southam Road
01788 522299

**Patrick Ryan
Hair Salon**
Southam Rd
01788 521315

**Birth
Boutique**
Southam Road
07842 643409

**Dunchurch
Barbers**
Southam Road
07508 440664

**Rugby Rd
Newsagents**
Rugby Rd
01788 810422

**Solstice Nursery
and Cafe**
Coventry Road
01788 711797



Sponsored by



DAVID WILSON HOMES

WHERE QUALITY LIVES





Where to eat in Dunchurch

Pubs, restaurants, take-aways and coffee shops – the choice is yours

Dunchurch Fish Bar Takeaway
Southam Rd
01788 815058

The Green Man Public House
Daventry Rd
01788 810210

Huntsman Carvery Restaurant
The Square
01788 811748

The Dun Cow Public House
The Square
01788 810305

Cinnamon Lounge Indian Restaurant
The Square
01788 812855

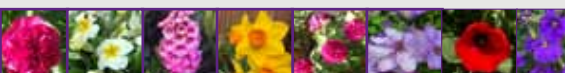
Malancha Indian Restaurant
Daventry Road
01788 819141

Dunchurch Pizza Place Takeaway
Southam Road
01788 810000

Crystal Chinese Takeaway
Southam Road
01788 812888

Dunchurch Social Club
The Square
01788 811177

Square Coffee Coffee Shop
The Square
07816 278409



GALLACHERS WINE MERCHANTS



Perfect Wines for Sunny days

The stunning Chateau Minuty, Côtes de Provence range of wines are available at Gallachers. Beautiful, dry, crisp wines with aromas of strawberries, peach and melon



Fancy a taste?

Thursday 28th April 7pm
We welcome Chateau Minuty to Gallachers to host a tasting evening.
Book your tickets at
www.gallacherswinerugby.co.uk



Gallachers Wine Merchants. Wine bar & shop open
Regent St. Rugby

www.gallacherswinerugby.co.uk
Tel: 01788 568543
@gallachersofrugby
#gallacherswine

Weds /Thurs 1200-5pm

Fri 11.00-11.00,
Sat 11.00-6.00
Open Late Friday Nights

Shop, Tasting, Bar

Sponsored by



DAVID WILSON HOMES

WHERE QUALITY LIVES

Who's That Baby?

Can you tell who these Royal babies are? Answers are on page 33



Rugby Road Newsagent

Newspaper delivery
to village &
surrounding
areas

- Lottery
- Groceries
- Penny sweets
- Friendly, helpful staff!



Open from 6am to 6pm

Monday - Friday

7am to 5pm Saturday

7am to 11am Sunday

19 Rugby Road, Dunchurch CV22 6PG

Telephone: 01788 810422



The Almshouses, Leamington Hastings

The Almshouses offer quiet and comfortable long accommodation in a peaceful, well-kept part of the village of Leamington Hastings. Dating back to the 16th century but fully-refurbished and opened in 1983, the Almshouses are managed and promoted by the Leamington Hastings Community Fund for the benefit of the needs and the local community.

Accommodation

There are eight self-contained flats with access to the communal garden. The flats are unfurnished and consist of an entrance hall, living room, kitchen, bathroom, and bedroom. There is also a small storage room and a parking space.

Costs

- Flats with a local council grant.
- People with limited financial resources.
- People who are over 60 years of age.
- People who are single or widowed.
- People who are not currently in receipt of a pension.
- The local council will pay rent but there is a monthly charge towards the cost of providing maintenance and other services including heating and hot water.

For further information please contact The Clerk to the Trustees, tel 01962 338199 or by email to almshouses@aol.com

**ONE FLAT
CURRENTLY
AVAILABLE**

For further information please contact The Clerk to the Trustees, tel 01962 338199 or by email to almshouses@aol.com

LHCE is a Registered Charity (Charity No 335462)

**Contact the Clerk to the Trustees
on 07962 169199
or by email to alexrigler@aol.com**

Girlguiding

Dunchurch Girlguiding is alive and meeting regularly on a Wednesday.

- Rainbows (5–7 yr olds) at the Village Hall
- Brownies (7–10 yr olds) at the New Baptist Church
- Guides (10–14 yr olds) at Thurlaston Village Hall



We would welcome more girls and even leaders.

Lots of fun with games and crafts which enhance basic life skills in a most enjoyable way. For more details, log onto the Girlguiding website:

www.ggw.org.uk/search-results?q=dunchurch

Advertising rates

Professionally delivered to every home and business in Dunchurch Parish including Toft, Lime Tree Village, Dunchurch Hall, Lime Tree Avenue, Tilia Park, Poets Meadow and Fernwood Estates. Over 1700 copies distributed each quarter, with an estimated readership of 3000.

Digital advertising included free of charge: advertisers can have, if required, a post on FODS Facebook Group page once a week on 'Thankful Thursday' – a useful update message for you and an effective opportunity to advertise for staff vacancies etc locally at no cost.

Size	Dimensions	Price
Full page	137mm x 197mm	£100
Half page landscape	137mm x 97mm	£50
Half page portrait	66mm x 197mm	£50
Quarter page	66mm x 97mm	£25

To place an order call Barbara on 07837 182114 or email info@vghrugby.co.uk

Deadline for September 2022 issue: 1 August
Deadline for December 2022 issue: 1 November

Index of advertisers

Armadillo	18
Anne-Marie Florist	36
Contented Soles	44
David Wilson Homes	7
Dunchurch Nursery	28
Dunchurch Social Club	28
Dunchurch Village Hall	10
Fine & Country	34
Gallaghers	39
Jane Archer – Artist	14
Leamington Hastings Bowls	16
Leamington Hastings Almshouses	40
LMC Physio	32
Loveyouloveyoga	16
Malancha	21
Montessori Nursery	5
Rheams	34
The Printing Works	36
Rugby Floor Company	10
Rugby Road Newsagents	40
Smiths Nurseries	30
Solstice Nursery and Cafe	16
The Green Man	11
Union Carriers	18
Wanda Fashions	34
Wombles Wheels	10

Dunchurch community directory

Badminton Group	Dunchurch Village Hall, Monday 7.30pm	judge.patricia@googlemail.com Pat Judge 01788 810253
Beavers	Boys and girls aged 5¼ – 8 Mondays & Tuesdays, Scout hut, Done Cerce Close	www.dunscout.org.uk join@dunscout.org.uk
Cubs	Boys and girls aged 8 – 10½ Wednesdays at the Scout hut, Done Cerce Close.	www.dunscout.org.uk join@dunscout.org.uk
District of Dunchurch Brass	Wednesdays 7.45–10pm, Band Room, 15 Rugby Road, CV22 6GP	Lorraine Goodacre 07963 144704 Gary Smallwood 07876 688210 www.districtofdunchurchbrass2006-web.info
Dunchurch Allotment Association	Situated on Coventry Rd	www.dunchurchallotments.org.uk admin@dunchurchallotments.org.uk Secretary Paul Sanders 01788 811744
Dunchurch Bellringers	St. Peter's Church. Sunday Service ringing 9.50-10.30am, Practice, Wed 7.45-9pm	Mike Bennett, Tower Captain, 01788 814304 mbennettmss@gmail.com
Dunchurch and Bilton Cricket Club	Based as Dunchurch Village Hall Rugby Rd.	https://dunchurchbilton.play-cricket.com
Dunchurch and Thurlaston WI	Meetings 2nd Thursday of each month, 2pm, WI Hall, Southam Rd.	Anne Gilbert 01788 811837 annegilbert1@hotmail.com
Dunchurch Band	Senior and training band	www.dunchurchband.co.uk dunchurch.band100@yahoo.com
Dunchurch Baptist Church	Currently meeting at the Dunchurch Methodist Church, Cawston Lane.	www.dunchurchbaptistchurch.org.uk Minister Dave Woods 01788 810132 davewoods@dunchurchbaptistchurch.org.uk Secretary Claire Siddaway 01788 815752 secretary@dunchurchbaptistchurch.org.uk
Dunchurch Boughton C of E (VA) Junior School	Primary education situated in Dew Close	www.dunchurchjuniorschool.org.uk admin3391@welearn365.com 01788 811028
Dunchurch Community Library	School Street Open Tues, Thur, Fri 10am - 5pm	www.warwickshire.gov.uk/dunchurchlibrary dunchurchcommunitylibrary@btconnect.com 01788 811355
Dunchurch Festival Group	Organise fete and other events. Meetings third Monday of each month 7.30pm at the village hall	www.dunchurchevents.org Rob Collings 01788 817307 mashedspud1@gmail.com
Dunchurch Health Walks	Tuesday 2pm, Friday 10.30am Meet at war memorial	
Dunchurch Infant School and Nursery	Nursery children are taken from aged 2yrs 9months. Other year groups, Reception, year 1 and 2	www.dunchurchinfantschoolandnursery. co.uk office@dunchurchinfants.co.uk 01788 810292

Dunchurch Pantomaniacs	Organise and perform village panto in January. Rehearsals begin October.	paul.lepoidevin@btinternet.com sueprotheroe@ymail.com
Dunchurch Parish Council	PC office based in the Library. Open Tuesday and Thursdays 10am – 1.00pm	clerk@dunchurchpc.org 01788 817550 or 07474 705061
Dunchurch Photographic Society	Meetings held at WI Hall, Southam Road	www.dunchurchps.com secretary@dunchurchps.com
Dunchurch Surgery	Dunsmore Heath (off Rugby Rd)	www.dunchurchsurgery.warwickshire.nhs.uk 01788 522448
Dunchurch Village Hall	Rugby Road	jane.bookings@dunchurchsportsandvhall.co.uk 01788 522444
Dunchurch Voices	Ladies choir meet Wednesdays, 7.30pm at the infant school.	Barbara Davies 07890 659857
First Dunchurch Scout Group	Fun, challenge and adventure for boys and girls aged 10½–14. Done Cerce Close on Thursdays	www.dunscout.org.uk join@dunscout.org.uk
Dunchurch Girlguiding including: 1st Rainbows 3rd Brownies 1st Guides	GirlGuiding girls have fun, adventure and space to discover their potential Age 5 – 7 yrs. Wed 3.45 – 4.45 pm Age 7 – 10 yrs. Wed 5.00 – 6.30pm Age 10 - 14 yrs. Wed 6.45 – 8.15pm	www.girlguiding.org.uk is where parents/ carers may express their daughters' interest in joining. Adult volunteers welcomed.
Friends of Dunchurch Society	Organises Britain in Bloom and Winter Wonderland Produces the village magazine	info@vghrugby.co.uk 07837 182114 fodnews1@gmail.com
Knowing Stillness Meditation	Dunchurch Library 10am Wednesday	Jim Hesketh 01788 891066
Rugby About Turn	Newsletters on local development	richardallanach@aol.com
Rugby Village Bridge Club	EBU Affiliated. Four pairs sessions and three practice sessions weekly Courses/ teams occasionally. Held in club room, Dunchurch Village Hall.	www.rugbyvillagebridge.co.uk rugbyvillagebridge@gmail.co.uk 07710 467023
St Peter's Church		Vicar: Reverend Patricia Townshend revptownshend@gmail.com, 01788 461987 Churchwardens: Celia Jones 01788 314564 / 07712 936355 Kathryn Fowler: 07780 116024 / 01788 311118 Thurlaston Deputy Churchwarden: Brian Bowsher: 01788 812094 churchwarden@stpeters-dunchurch.org

To make any amendments or to add your Dunchurch-based, non-commercial club or organisation, please email
friendsofdunchurch@gmail.com

Podiatry clinic & Shoe Fitters for all foot types

Degree Qualified HCPC Registered Podiatrist/Chiropodist

We are Rugby and Bilton's premiere podiatry/chiropody clinic and footwear specialists. We pride ourselves in being friendly and approachable and will only offer advice and treatment that is in your best interests to help you.

General Podiatry and Chiropody services

including:

- **Nail cutting**
- **Corns & Calluses**
- **Diabetic foot care**
- **Verrucae**
- **Ingrown toenails**
- **Nail reconstruction**
- **Warm wax massage for hands and feet**
- **Fungal infections**
- **Home visits**



Richard has carried out extensive training and specialises in the following:

- **Nail surgery for ingrown nails**
- **Steroid/ hyaluronic acid injections**
- **Gait analysis/ biomechanical assessment**
- **Bespoke insoles created using the latest 3d laser scanning technology**

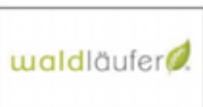
NEW FOR 2022!!!

Minor skin surgeries now available including:

- **Permanent surgical corn removal**
- **Verruca needling or surgical removal**
- **Suspicious mole/lesion biopsy and removal**



THE PERFECT FIT FOR WIDER FEET



www.contentedsoles-bilton.co.uk

30a The Green. Bilton. CV22 7LY

01788 877575